

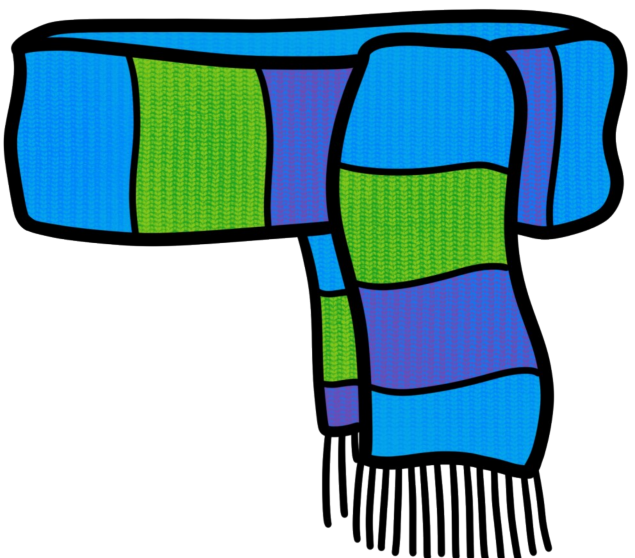
Éèdèdè



ai Geimh

The image features a decorative border at the top and bottom consisting of a repeating pattern of light blue and white squares. In the center, the text "ai Geimh" is displayed in a light blue, rounded, sans-serif font. Each letter has a black outline and a grey drop shadow, giving it a 3D appearance. The text is positioned between the two checkered borders.

ridh



 Seomra Ranga