

# Weather

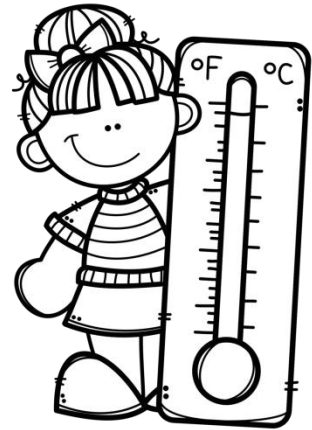


# Forecasting

# Weather Forecasting

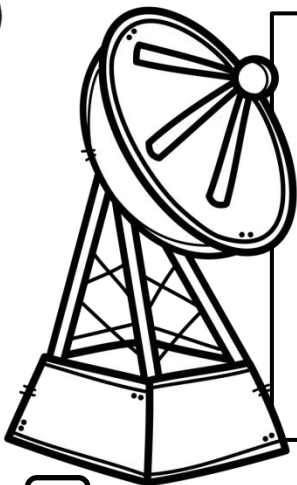
## In the Beginning

The art of weather forecasting began with the early civilisations using recurring astronomical and meteorological events to help them to monitor changes in the weather and make predictions of future weather patterns.



## Later on

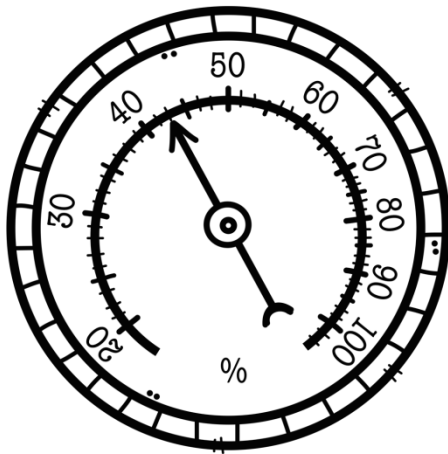
Throughout the centuries, forecasts about weather patterns continued to be based on weather lore and personal observations of the weather. However, such predictions proved to be inadequate.



## Later still

By the middle ages, it was clearly understood that further knowledge was necessary in order to make proper predictions about the weather. Instruments were needed in order to measure aspects of the weather.

# Weather Forecasting



## First Instruments

In the mid-15th century, the first form of a hygrometer was invented to measure humidity in the air. Around 1592, the first thermometer was invented to measure air temperature. In 1643, the first barometer was invented to measure atmospheric pressure.

## The Telegraph

The invention of the telegraph in the mid-19th century allowed data which was compiled from weather observations to be transmitted to centralised observers and compilers. To help with this, weather observation stations were established in many locations.

Mon	Tues	Wed	Thurs	Fri

# Weather Forecasting

## Weather Maps

Collecting and interpreting this data allowed for the creation of the first weather maps.

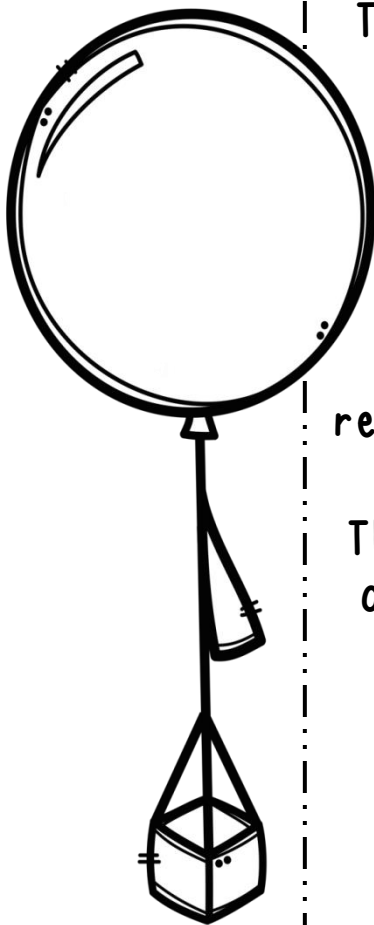


## The Radiosonde

The art of weather forecasting took another leap forward with the invention of the radiosonde in the 1920s. This was a battery-powered instrument carried into the air by a weather balloon to measure aspects of the weather and to transmit the results by radio to a ground receiver.

The data collected by the radiosonde could then be processed and used to create more detailed weather maps.

Today, radiosondes are launched every 12 hours from hundreds of weather stations all around the world.





# Weather Forecasting

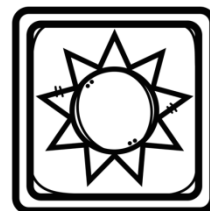
## National Meteorological Services

Towards the end of the 19th century, national meteorological services began to be established. The United States service was set up in 1871, followed soon by services in Japan, India and Brazil. In 1880, the International Meteorological Organisation (IMO) was set up.



## Ireland's Meteorological Service

The first 'real time' weather observation was transmitted from Valentia Island in Co. Kerry on the 8th October 1860. It was not until 1936 that the Irish Meteorological Service was established to provide accurate weather information for transatlantic aviation.



# Weather Forecasting

## Ireland's Meteorological Service

In 1948 Ireland's Meteorological Service assumed responsibility for the weather forecasts broadcast by Raidió Éireann. In 1952 it began to supply forecasts to the daily newspapers. In 1962, it began live broadcasts on Teilifís Éireann. In 1979 its headquarters were moved to Glasnevin, Dublin.

## Ireland's

## Meteorological Service

In 1990, a high resolution weather radar system was installed at Dublin Airport and another one was installed in Shannon Airport in 1996. Also in 1996, the Meteorological Service changed its name to Met Éireann. Met Éireann launched its website in 2001.

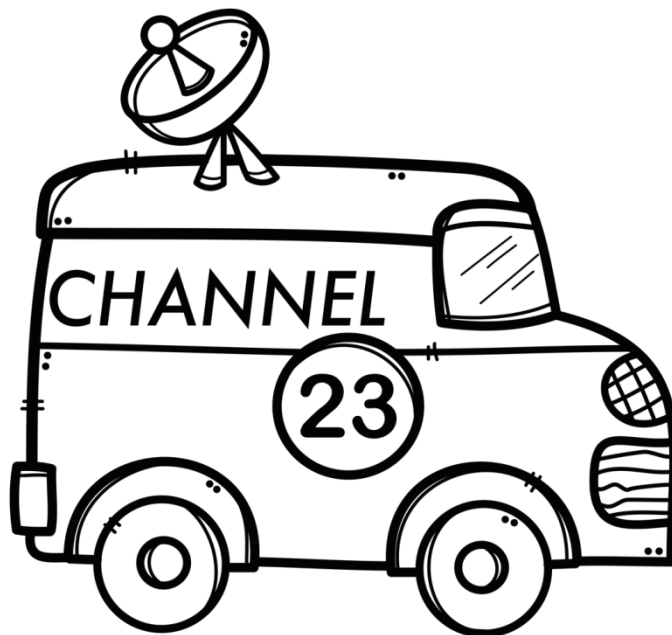


# Weather Forecasting

## Met Éireann

Today, Met Éireann provides weather information to the state. It monitors, analyses and predicts Ireland's weather and climate and provides a range of high quality meteorological and related information to the public and others eg. farmers and the fishing and aviation industries.

Met Éireann now provides weather forecasts for newspapers, television, radio, internet and mobile application platforms.



# Weather Forecasting

Answer the following questions based on information in this booklet:

1. What were early weather forecasts based on?
2. Why, do you think, that weather instruments were considered necessary by the time of the Middle Ages?
3. When was the first thermometer invented?
4. Why was the invention of the Telegraph important for the development of weather forecasting?
5. What was a Radiosonde?
6. How often are radiosondes launched nowadays?
7. When was Ireland's Meteorological Service first set up?
8. Where is the headquarters of Ireland's Meteorological Service?
9. In 1996 Ireland's Meteorological Service changed its name. What is it now known as?
10. What occupations/industries rely on the weather forecasts from Ireland's Meteorological Service?



## Resources used in this file from:



<https://www.teacherspayteachers.com/Store/Hello-Literacy>

TextGIRaffe

<https://www.textgiraffe.com/>



<https://www.teacherspayteachers.com/Store/Clipartino>



<https://www.teacherspayteachers.com/Store/Krista-Wallden-Creative-Clips>