

JAPAN

Japan

1

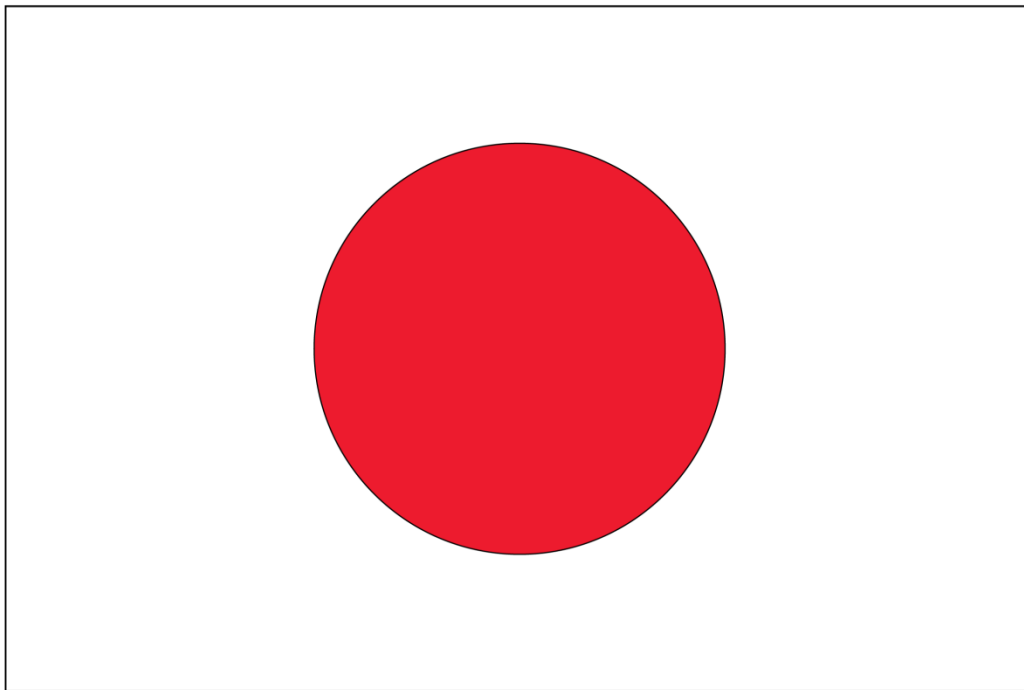


Japan is an island state in the Pacific Ocean off the east coast of Asia. It is made up of the four large islands of Hokkaido, Honshu, Kyushu and Shikoku as well as many other small islands. Its nearest neighbours are North and South Korea, China and Russia.



Japan

2



The Japanese flag is a white rectangle with a solid red circle in the centre. The red circle represents the sun. Japanese people refer to the flag as the "Hinomaru" which means "sun disc".

Japan

3



The capital of Japan is Tokyo. It is located on the island of Honshu and is one of the largest cities in the world. It is part of a large urban area that also includes the cities of Yokohama, Chiba and Kawasaki with an estimated population of 38 million.

Japan

4



Japan entered World War II with its surprise attack on the US Naval Fleet at Pearl Harbour in Hawaii on December 7th 1941. Two days later Britain and the US declared war on Japan.

Japan

5



The US dropped two atomic bombs on the Japanese cities of Hiroshima and Nagasaki, killing approximately 140,000 people. These events brought World War II to an end.

Japan

6



The Hiroshima Dome is the ruins of a 1915 commercial exhibition hall. The building was the only structure left standing near the hypocentre of the atomic bomb. It is now part of the Hiroshima Peace Memorial Park and is a reminder of the destruction caused by the atomic bomb.

Japan

7



Japan's currency is called the Yen. The symbol for the Yen is ¥
Currently €1 = ¥118.62

Japan

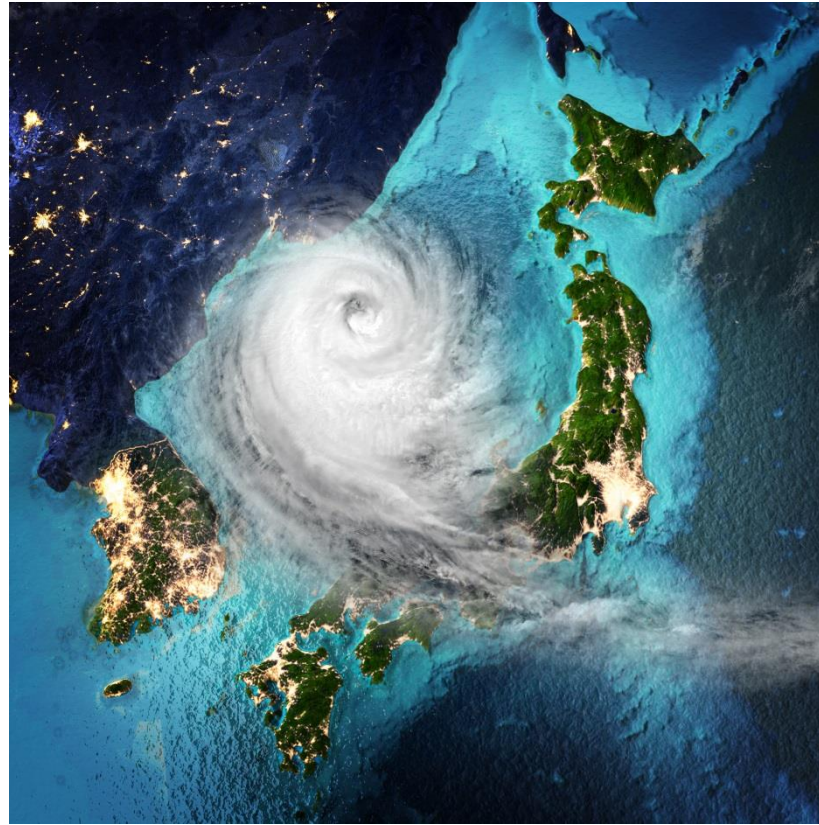
8



Manufacturing industries are hugely important to the Japanese economy. Car manufacturing is a central part of that industry. Japanese car manufacturers include: Toyota, Honda, Daihatsu, Nissan, Suzuki, Mazda, Mitsubishi, Subaru, Isuzu, Kawasaki and Yamaha.

Japan

9



Several typhoons strike Japan each year, chiefly in late summer and early autumn. They bring heavy rain, violent winds and stormy conditions.

Japan

10



Japan is well known for its distinctive food. Traditional Japanese dishes includes sushi (cured raw fish), sashimi (thinly sliced raw food), tempura (battered and fried fish), ramen (noodles in broth), yakitori (chicken on a skewer) and miso (soup).

Japan



11

Sake, a traditional Japanese-style rice wine, is a popular alcoholic drink. It is made by fermenting rice that has been polished to remove the bran.



Seomra Ranga

© Seomra Ranga 2019 www.seomraranga.com

Japan

12



Most Japanese people wear clothes similar to those worn in Europe and the US. On special occasions, women and girls may wear the traditional long dress called a kimono. This is tied around the waist with a sash called an obi and worn with sandals known as zori.

Japan

13



Origami, the art of paper folding, is often associated with Japanese culture. The word comes from the words ori (meaning folding) and kami (meaning paper).



Seomra Ranga

© Seomra Ranga 2019 www.seomraranga.com

Japan

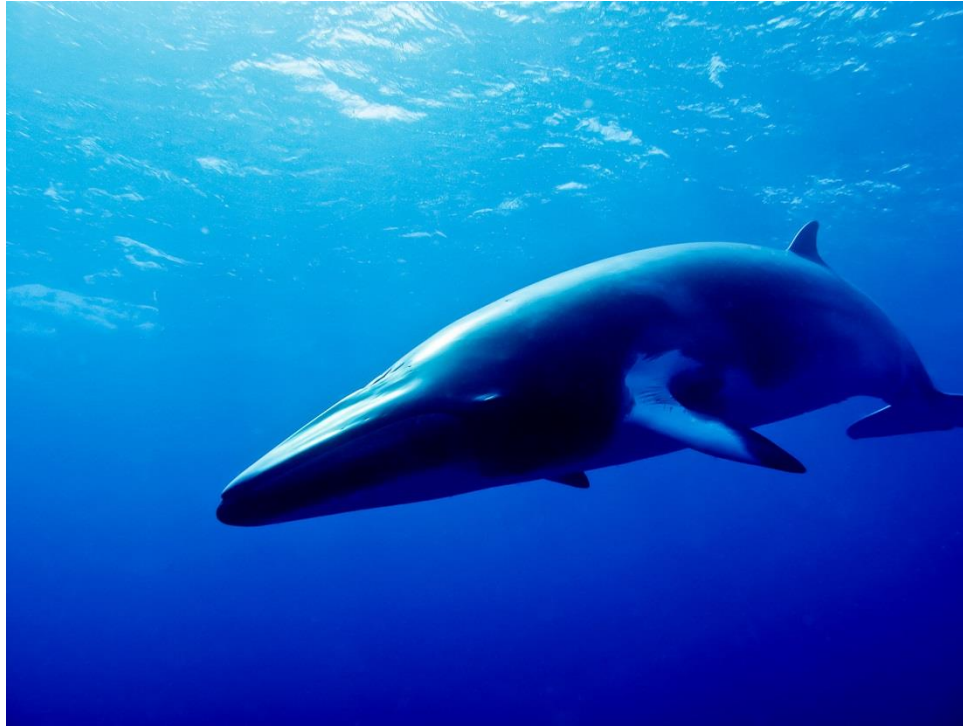
14



Sumo wrestling is a popular spectator sport in Japan. It is a centuries old tradition and is a professional sport. A sumo fight takes place in a ring where the wrestlers try to force each other out of the ring or to touch the ground with any other part of the body except the soles of the feet.

Japan

15



Controversially, Japan is one of the few nations in the world that hunt whales. In July 2019, Japanese fishermen resumed commercial whale hunting for the first time in 30 years.

Japan

16



The koto is a traditional Japanese stringed musical instrument. It is the national instrument of Japan. It is approximately 180cm long and is made from kiri wood.

Japan

17



The biwa is a short-necked Japanese musical instrument with a pear-shaped body. It usually has four or five silk strings and is played with a large wedge-shaped plectrum.

Japan

18



The Japanese shamisen (or samisen) is a traditional instrument with a long neck. It has three strings made of silk and is played with a plectrum.

Japan

19



Mount Fuji, Japan's tallest peak, is considered to be a sacred mountain. It is a dormant volcano situated 100km southwest of Tokyo. It is cone-shaped and its summit is covered in snow for about five months of the year.



Japan

20



Fishing is a very important industry in Japan. Japanese fishermen catch anchovies, pollock, mackerel, salmon, squid, tuna as well as crabs and other shellfish.

Japan

21



Kyoto, once the capital of Japan, is a city on the island of Honshu. It is considered to be the cultural capital of Japan and is a major tourist destination. It is home to several Buddhist temples, Shinto shrines, palaces and gardens.

Resources used in this file from:



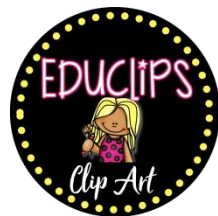
<https://www.teacherspayteachers.com/Store/Hello-Literacy>



<https://www.teacherspayteachers.com/Store/Dancing-Crayon-Designs>



<https://depositphotos.com/>



<https://www.teacherspayteachers.com/Store/Educlips>



<https://www.teacherspayteachers.com/Store/Teachers-Resource-Force>