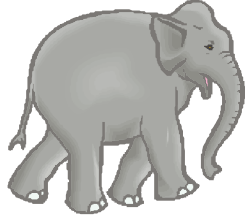


Dear Zoo Word-Picture Match

Draw an arrow from each animal to its matching phrase from the "Dear Zoo" story.



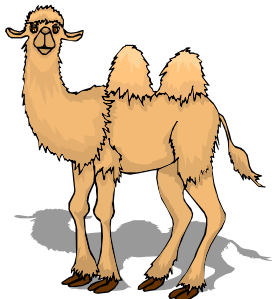
too fierce



too grumpy



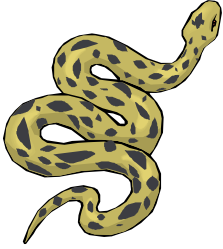
too tall



too big

Dear Zoo Word-Picture Match

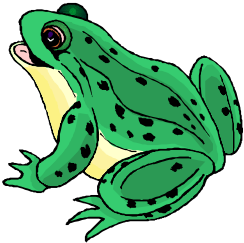
Draw an arrow from each animal to its matching phrase from the "Dear Zoo" story.



perfect



too naughty



too scary



too jumpy